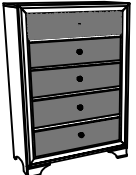




ASSEMBLY INSTRUCTIONS

CROWNMARK : B4300-4 CHEST

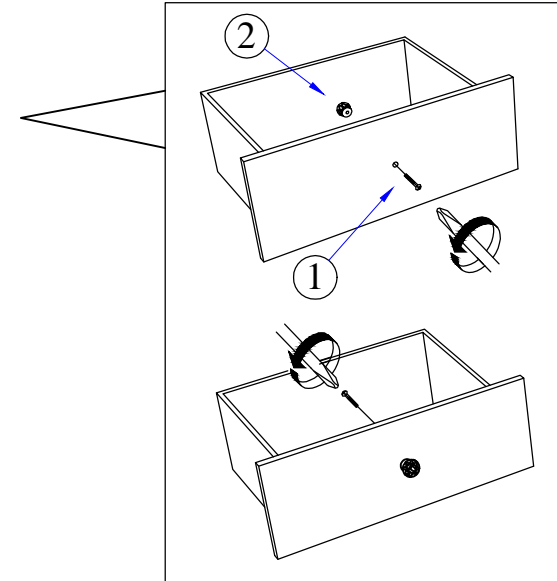
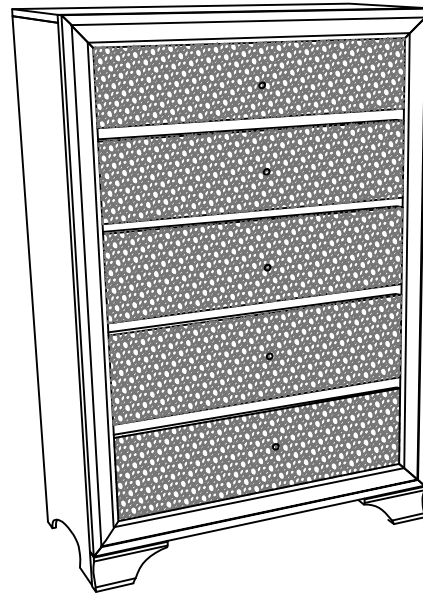
(BOX 1) BOX OF CHEST

NO	ITEM	QTY
	CHEST	
A		1 PC

(BOX 1) HARDWARE LIST

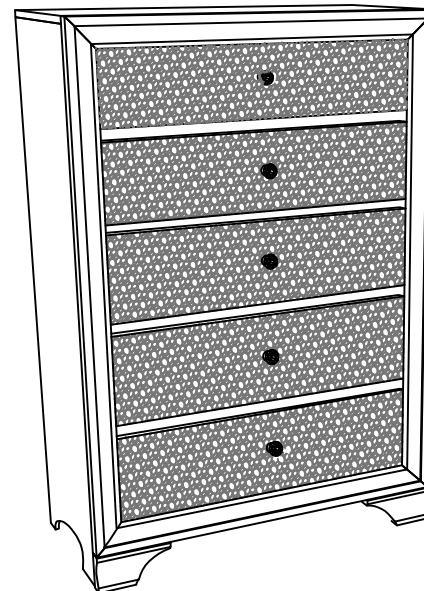
NO	ITEM	QTY
1	Truss Head Machine Screw m4x28mm Blk 	5 PCS
2	HANDLE 	5 PCS

STEP 1 : Remove HANDLE (2) using a Philips head screw driver as shown in illustration STEP - A. Re-install the HANDLE (2) as per diagram STEP - B. Repeat STEP - A STEP - B until HANDLE (2) are attached correctly.



STEP - A

STEP - B



COMPLETED ASSEMBLY

NOTE : MUST TIGHTEN SCREWS PERIODCALLY OR SCREWS WILL BECOME LOOSE.CHECK TIGHTNESS OF ALL SCREWS EVERY 6-8 WEEKS.