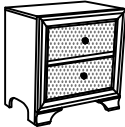


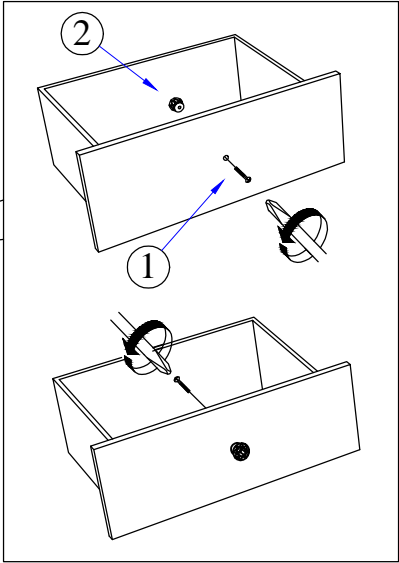
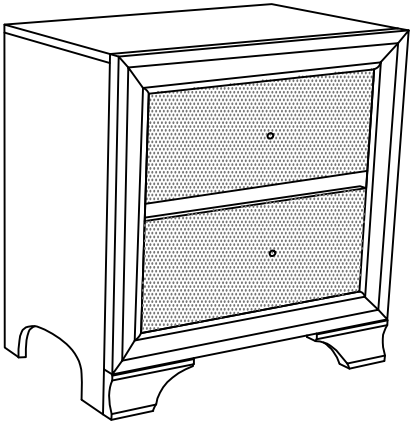


ASSEMBLY INSTRUCTIONS

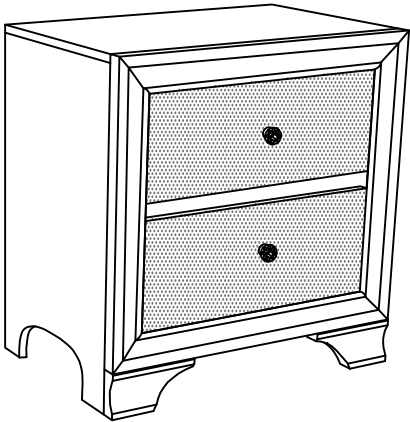
CROWNMARK : B4350-2 NIGHT STAND		
(BOX 1) BOX OF NIGHT STAND		
NO	ITEM	QTY
A	NIGHT STAND 	1 PC
(BOX 1) HARDWARE LIST		
NO	ITEM	QTY
1	Truss Head Machine Screw m4x28mm Blk 	2 PCS
2	HANDLE 	2 PCS

STEP 1 : Remove HANDLE (2) using a Philips head screw driver as shown in illustration STEP - A. Re-install the HANDLE (2) as per diagram STEP - B. Repeat STEP - A STEP - B until HANDLE (2) are attached correctly.



STEP - A

STEP - B



COMPLETED ASSEMBLY

NOTE : MUST TIGHTEN SCREWS PERIODCALLY OR SCREWS WILL BECOME LOOSE.CHECK TIGHTNESS OF ALL SCREWS EVERY 6-8 WEEKS.