




# ASSEMBLY INSTRUCTIONS

**CROWNMARK : B4350-4  
CHEST**

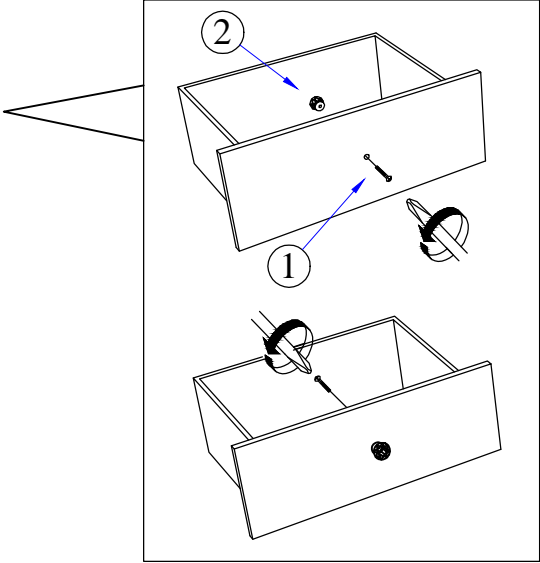
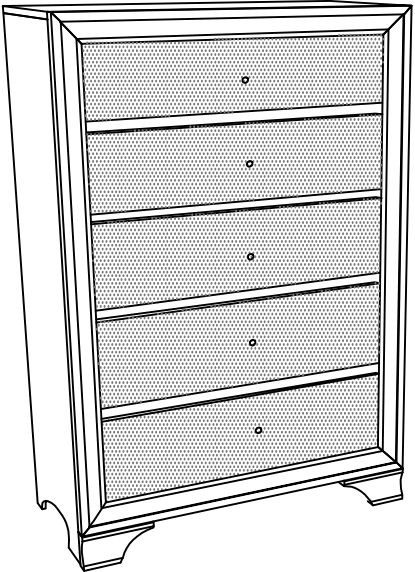
**(BOX 1)  
BOX OF CHEST**

NO	ITEM	QTY
	CHEST	
A		1 PC

**(BOX 1)  
HARDWARE LIST**

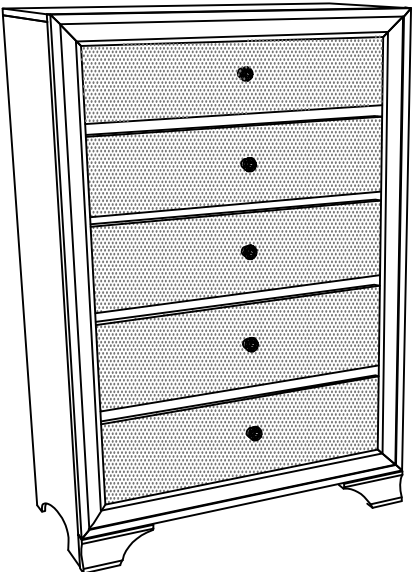
NO	ITEM	QTY
1	Truss Head Machine Screw m4x28mm Blk 	5 PCS
2	HANDLE 	5 PCS

**STEP 1 :** Remove HANDLE ( 2 ) using a Philips head screw driver as shown in illustration STEP - A. Re-install the HANDLE ( 2 ) as per diagram STEP - B. Repeat STEP - A STEP - B until HANDLE ( 2 ) are attached correctly.



STEP - A

STEP - B



**COMPLETED ASSEMBLY**

NOTE : MUST TIGHTEN SCREWS PERIODCALLY OR SCREWS WILL BECOME LOOSE.CHECK TIGHTNESS OF ALL SCREWS EVERY 6-8 WEEKS.